

Ceiling concealed type

Low noise type **PEFY-P VMR-E-L/R**

		PEFY-P20VMR-E-L	PEFY-P25VMR-E-L	PEFY-P32VMR-E-L
Power source		1-phase 220-230-240V 50Hz / 1-phase 220-230V 60Hz		
Cooling capacity	*1 kW	2.2	2.8	3.6
	*1 BTU/h	7,500	9,600	12,300
Heating capacity	*1 kW	2.5	3.2	4.0
	*1 BTU/h	8,500	10,900	13,600
Power consumption	Cooling kW	0.06 / 0.06	0.06 / 0.06	0.07 / 0.08
	Heating kW	0.06 / 0.06	0.06 / 0.06	0.07 / 0.08
Current	Cooling A	0.29 / 0.29	0.29 / 0.29	0.34 / 0.38
	Heating A	0.29 / 0.29	0.29 / 0.29	0.34 / 0.38
External finish		Galvanized		
Dimension	Rear inlet mm(in.)	292 x 640 x 580 (11-1/2 x 25-1/4 x 22-7/8)		
	Bottom inlet mm(in.)	300 x 640 x 570 (11-7/8 x 25-1/4 x 22-1/2)		
Net weight		18 (40)		
Heat exchanger		Cross fin (Aluminum fin and copper tube)		
FAN	Type x Quantity	Sirocco fan x 1		
	Airflow rate (Lo-Mid-Hi)	m ³ /min	4.8-5.8-7.9	4.8-5.8-9.3
		L/s	80-97-132	80-97-155
		cfm	170-205-279	170-205-328
External static pressure *2	Pa	5		
Motor	Type	1-phase induction motor		
	Output kW	0.018		0.023
Air filter		PP Honeycomb fabric (washable)		
Refrigerant pipe diameter	Gas mm(in.)	ø12.7 (ø1/2) Brazed		
	Liquid mm(in.)	ø6.35 (ø1/4) Brazed		
Field drain pipe diameter		O.D. 26 (1)		
Sound pressure level (Lo-Mid-Hi) *3	220V	20-25-30		20-25-33
	230V	21-26-32		21-26-35
	240V	22-27-30		22-27-33

		PEFY-P20VMR-E-R	PEFY-P25VMR-E-R	PEFY-P32VMR-E-R
Power source		1-phase 220-230-240V 50Hz / 1-phase 220-230V 60Hz		
Cooling capacity	*1 kW	2.2	2.8	3.6
	*1 BTU/h	7,500	9,600	12,300
Heating capacity	*1 kW	2.5	3.2	4.0
	*1 BTU/h	8,500	10,900	13,600
Power consumption	Cooling kW	0.06 / 0.06	0.06 / 0.06	0.07 / 0.08
	Heating kW	0.06 / 0.06	0.06 / 0.06	0.07 / 0.08
Current	Cooling A	0.29 / 0.29	0.29 / 0.29	0.34 / 0.38
	Heating A	0.29 / 0.29	0.29 / 0.29	0.34 / 0.38
External finish		Galvanized		
Dimension	Rear inlet mm(in.)	292 x 640 x 580 (11-1/2 x 25-1/4 x 22-7/8)		
	Bottom inlet mm(in.)	300 x 640 x 570 (11-7/8 x 25-1/4 x 22-1/2)		
Net weight		18 (40)		
Heat exchanger		Cross fin (Aluminum fin and copper tube)		
FAN	Type x Quantity	Sirocco fan x 1		
	Airflow rate (Lo-Mid-Hi)	m ³ /min	4.8-5.8-7.9	4.8-5.8-9.3
		L/s	80-97-132	80-97-155
		cfm	170-205-279	170-205-328
External static pressure *2	Pa	5		
Motor	Type	1-phase induction motor		
	Output kW	0.018		0.023
Air filter		PP Honeycomb fabric (washable)		
Refrigerant pipe diameter	Gas mm(in.)	ø12.7 (ø1/2) Brazed		
	Liquid mm(in.)	ø6.35 (ø1/4) Brazed		
Field drain pipe diameter		O.D. 26(1)		
Sound pressure level (Lo-Mid-Hi) *3	220V	20-25-30		20-25-33
	230V	21-26-32		21-26-35
	240V	22-27-30		22-27-33

Notes:

*1 Cooling/Heating capacity indicates the maximum value at operation under the following condition.

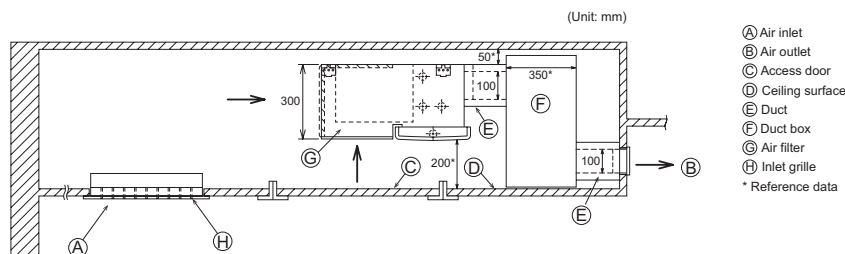
Cooling : Indoor 27°C (81°F) DB/19°C (66°F) WB, Outdoor 35°C (95°F) DB

Heating : Indoor 20°C (68°F) DB, Outdoor 7°C (45°F) DB/6°C (43°F) WB

*2 The external static pressure is set to 5Pa (at 220V, 230V, 240V).

*3 Measured in anechoic room. Sound pressure levels of the unit with a rear air inlet. (Sound pressure levels are higher than the unit with a bottom air inlet.)

• If quietness is required, installation of an L-shaped duct is recommended. Please refer to the installation pattern below for the duct system design.



VRE Lineup

VRE Y-Series

VRE R2-Series

VRE WY-Series

VRE WR2-Series

VRE S-Series

VRE BC Controllers

VRE Indoor Units

HVRE Lineup

HVRE (W/R)2-Series

HVRE Indoor Units

Technologies and Functions

Lossnay System

Remote Controller

Hot Water Solution