

# Flexible Compact Controller

FX3G & FX3GC

PRODUCT FLYER

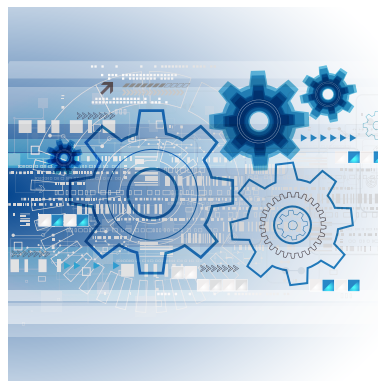


FX3G compact series of controllers from Mitsubishi Electric were designed for simple, yet performance critical applications. With dual bus architecture FX3G provides flexible expansion possibilities including analog, communications and digital I/O. In response to customer demands Mitsubishi Electric offers FX3GC, a super compact PLC with connector type I/O terminals for very small control panels.



## More For Less

While being intended for smaller systems, the FX3G still delivers powerful features. Large program memory plus high-speed execution to enhance system productivity. The FX3G provides easy expansion options for additional I/O, special function blocks, high performance communication and analog capabilities.



## System Integration

The FX3G can operate as a standalone controller as well as integrated with other systems. Such as inverters for more precise motor operation and motion control with up to 3 independent axes without additional hardware.



## Ultra Compact Size

For very small control panels the FX3GC offers the same functionality and all the power, sophistication and process capability but is one quarter of the size.

## Features

- » User-friendly software GX Works 2 FX
- » Positioning control
- » Up to 60 I/O base configuration
- » Real-time clock
- » High-speed counter
- » USB & serial interface
- » Integrated power supply
- » Expandable with digital I/O & function modules
- » LEDs for I/O status

# SPECIFICATIONS

FX3G - Base Units with 14-24 I/Os								
Specifications	FX3G-14 MR/ES	FX3G-14 MT/ESS	FX3G-14 MR/DS	FX3G-14 MT/DSS	FX3G-24 MR/ES	FX3G-24 MT/ESS	FX3G-24 MR/DS	FX3G-24 MT/DSS
Integrated inputs/outputs	14				24			
Power supply	100 - 240 V AC		24 V DC		100 - 240 V AC		24 V DC	
Integrated inputs	8				14			
Integrated outputs	6				10			
Output type	Relay	Transistor (source)*	Relay	Transistor (source)*	Relay	Transistor (source)*	Relay	Transistor (source)*
Power consumption	W	31		19		32		21
Weight	kg	0.50						
Dimensions (WxHxD)	mm	90 x 90 x 86						

FX3G - Base Units with 40-60 I/Os									
Specifications	FX3G-40 MR/ES	FX3G-40 MT/ESS	FX3G-40 MR/DS	FX3G-40 MT/DSS	FX3G-60 MR/ES	FX3G-60 MT/ESS	FX3G-60 MR/DS	FX3G-60 MT/DSS	
Integrated inputs/outputs	40				60				
Power supply	100 - 240 V AC		24 V DC		100 - 240 V AC		24 V DC		
Integrated inputs	24				36				
Integrated outputs	16				24				
Output type	Relay	Transistor (source)*	Relay	Transistor (source)*	Relay	Transistor (source)*	Relay	Transistor (source)*	
Power consumption	W	37		25		40		29	
Weight	kg	0.70							
Dimensions (WxHxD)	mm	130 x 90 x 86				175 x 90 x 86			

FX3GC - Base Units with 32 I/Os	
Specifications	FX3GC-32 MT/DSS
Integrated inputs/outputs	32
Power supply	24 V DC
Integrated inputs	16
Integrated outputs	16
Output type	Transistor (source)*
Power consumption	W
Weight	kg
Dimensions (WxHxD)	mm
	34 x 90 x 87

## Notes:

\*Sink type transistor output units on request.

## Catalogue

[https://bit.ly/iQ-F\\_Series](https://bit.ly/iQ-F_Series)

## e-Learning

<https://www.mitsubishielectric.com/fa/assist/e-learning/eng.html>

For further information contact



Email: [iasw@meaust.meap.com](mailto:iasw@meaust.meap.com)  
 Website: [MitsubishiElectric.com.au](https://www.mitsubishielectric.com.au)