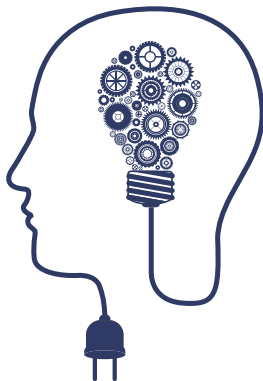


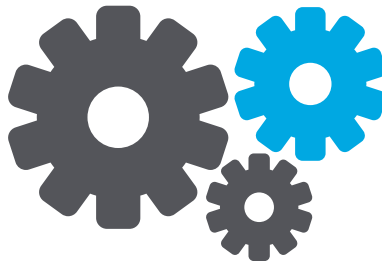


The Mitsubishi Electric MELSERVO MR-J4 Series of servo amplifiers, motors and motion modules, provide a high-end motion control system. Machine builders and end customers can increase production, safety and improve productivity thanks to simple operation and commissioning. MR-J4 systems are suitable for applications requiring an object to move to a target position with high precision, these include packing machines, traversing tables and handling systems.



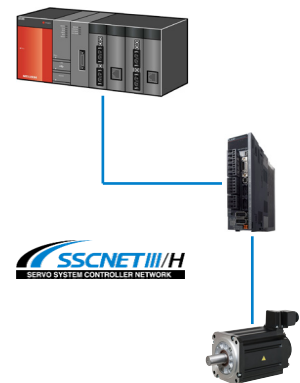
#### Innovative System Design

The MELSERVO J4 system tunes itself quickly and easily thanks to real time auto tuning and vibration suppression control. The amplifiers also feature a life diagnosis of installed components, this eliminates failures and machine downtime. Mechanical systems characteristics are also monitored for vibration and friction.



#### High Precision

The absolute encoder has more than 4 million pulses per revolution. This provides excellent true-running characteristics and a maximum positioning accuracy and processing speed which meets performance requirements of modern high-end machines.



#### High-Speed Networking

The SSCNET III/H is an advanced and accurate high-speed solution for networking from Mitsubishi Electric. It achieves fully synchronised communication and uses optical cables which prevent electromagnetic interference and ensure maximum performance, precision and reliability.

## Features

- » FA integrated network
- » Safety observation function
- » Seamless data communications with FA
- » Flexible networking
- » Diagnosis function
- » Multi axis amplifiers
- » Alarm history
- » MR configurator set up software
- » Real-time auto tuning

# SPECIFICATIONS

Servo Amplifier MR-J4-A/B (200 V Type)		10A/B (-RJ)	20A/B (-RJ)	40A/B (-RJ)	60A/B (-RJ)	70A/B (-RJ)	100A/B (-RJ)	200A/B (-RJ)	350A/B (-RJ)	500A/B (-RJ)	700A/B (-RJ)	11KA/B (-RJ)	15KA/B (-RJ)	22KA/B (-RJ)	
Capacity Range	[kW]	0.1	0.2	0.4	0.6	0.75	1	2	3.5	5	7	11	15	22	
Power Supply	Voltage/Frequency	3-phase or 1-phase 200 - 240 V AC, 50/60 Hz						3-phase 200 - 240 V AC, 50/60 Hz							
	Rated Current	[A]	0.9	1.5	2.6	3.2	3.8	5.0	10.5	16.0	21.7	28.9	46.0	64.0	95.0

Servo Amplifier MR-J4-A/B (400 V Type)		60A4/B4 (-RJ)	100A4/B4 (-RJ)	200A4/B4 (-RJ)	350A4/B4 (-RJ)	500A4/B4 (-RJ)	700A4/B4 (-RJ)	11KA4/B4 (-RJ)	15KA4/B4 (-RJ)	22KA4/B4 (-RJ)
Capacity Range	[kW]	0.6	1	2	3.5	5	7	11	15	22
Power Supply	Voltage/Frequency	3-phase 380 - 480 V AC, 50/60 Hz								
	Rated Current	[A]	1.4	2.5	5.1	7.9	10.8	14.4	23.1	31.8

Servo Amplifier MR-J4-W2-B/W3-B		W2-22B	W2-44B	W2-77B	W2-1010B	W3-222B	W3-444B
Capacity Range	[kW]	0.2	0.4	0.75	1	0.2	0.4
Number of Axes							
Power Supply	Voltage/Frequency	1-phase or 3-phase 200 - 240 V AC, 50/60 Hz			3-phase 200 - 240 V AC, 50/60 Hz	1-phase or 3-phase 200 - 240 V AC, 50/60 Hz	
	Rated Current per Axis	[A]	1.5	2.8	5.8	6.0	1.5

General Data	
Control System	Sinusoidal PWM control/current control system
Control Functions	Positioning/speed/torque
Control Connections	(A) Analogue/pulse train/9 digital inputs/6 digital outputs, (B) SSCNETIII/H/3 digital inputs, 3 digital outputs
Interfaces	USB, RS485, RS422
Protective Functions	Overcurrent shutdown, regeneration overvoltage shutdown, overload shutdown (electronic thermal), servomotor overheat protection, encoder fault protection, regeneration fault protection, undervoltage/sudden power outage protection, excess error protection
Protection	Self-cooling, open (IP20); fan cooling, open (IP20)
Ambient Temperature	Operation: 0 - 55°C (no freezing); storage: -20 - 65°C (no freezing)
Ambient Humidity	Operation, storage: 90 % RH max. (no condensation)
Others	Elevation: 1000 m or less above sea level; oscillation: 5.9 m/s <sup>2</sup> (0.6 G) max.

Servo Motor Series	Inertia	Class	Rated output										
			10W	30W	50W	0.5 kW	0.75 kW	1 kW	5 kW	7 kW	22 kW		
HG-KR Series	Low Inertia	200 V AC				50 W - 750 W							
HG-MR Series	Ultra-Low Inertia	200 V AC				50 W - 750 W							
HG-SR Series	Medium Inertia	200 V AC				0.5 kW - 7 kW							
		400 V AC				0.5 kW - 7 kW							
HG-JR Series	Low Inertia	200 V AC				0.5 kW		→					
		400 V AC				0.5 kW		→					
HG-AK Series	Ultra-Compact	48/24 V DC	10 W - 30 W										
HG-RR Series	Ultra-Low Inertia	200 V AC						1 kW - 5 kW					
HG-UR Series	Flat Type	200 V AC					0.75 kW - 5 kW						

## Catalogue

[http://bit.ly/MR\\_J4](http://bit.ly/MR_J4)

## e-Learning

<https://www.mitsubishielectric.com/fa/assist/e-learning/eng.html>

### Notes:

Contact your local sales office for capacity of 110 kW to 220 kW.



For further information contact

Email: [iasw@meaust.meap.com](mailto:iasw@meaust.meap.com)  
Website: [MitsubishiElectric.com.au](http://MitsubishiElectric.com.au)