

All in One Controller

FX3GE

PRODUCT FLYER



FX3GE

The FX3GE controller from Mitsubishi Electric provides advanced control, multiple communication possibilities and a wide range of options. FX3GE includes built-in analog, Ethernet connectivity, RS422 interface and USB programming, coupled with excellent performance making it a great fit for many applications.



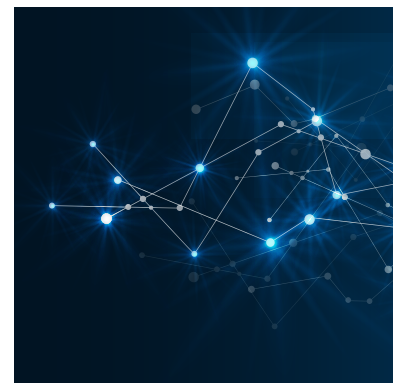
Built-in Functions

The FX3GE comes with 2 analog inputs and 1 analog output. Also an Ethernet port ideal for programming, monitoring using web browser, and making online modifications. It also enables the unit to be connected to a HMI.



Flexible Expansion

Base units are available with 24 or 40 inputs/outputs and it can be easily expanded with digital or analog adapters or communications modules, which can be fitted directly to the controller.



Communication Options

The FX3GE supports standard serial communications as well as Ethernet interface. Furthermore, networks used in the automation industry are available such as, CC-Link and Profibus DP. PC can be connected using the USB port enabling programs to be transmitted and monitored at high speed.

Features

- » User-friendly software GX Works 2 FX
- » Positioning control
- » 24 or 40 input/output points
- » High-speed counter
- » Extension & function adapter on base unit
- » Web browser
- » Integrated 2 analog input & 1 output
- » Slot for memory cassettes

SPECIFICATIONS

Base Units with 24 I/Os				
Specifications	FX3GE-24 MR/ES	FX3GE-24 MT/ESS	FX3GE-24 MR/DS	FX3GE-24 MT/DSS
Integrated Inputs/Outputs	24			
Power Supply	100 - 240 V AC		24 V DC	
Integrated Inputs	14			
Integrated Outputs	10			
Output Type	Relay	Transistor (source)*	Relay	Transistor (source)*
Power Consumption	W	32		21
Weight	kg	0.6	0.55	
Dimensions (WxHxD)	mm	130 x 90 x 86		

Base Units with 40 I/Os				
Specifications	FX3GE-40 MR/ES	FX3GE-40 MT/ESS	FX3GE-40 MR/DS	FX3GE-40 MT/DSS
Integrated Inputs/Outputs	40			
Power Supply	100 - 240 V AC		24 V DC	
Integrated Inputs	24			
Integrated Outputs	16			
Output Type	Relay	Transistor (source)*	Relay	Transistor (source)*
Power Consumption	W	37		25
Weight	kg	0.8	0.7	
Dimensions (WxHxD)	mm	175 x 90 x 86		

Notes:

*Sink type transistor output units on request.

Catalogue

https://bit.ly/iQ-F_Series

e-Learning

<https://www.mitsubishielectric.com/fa/assist/e-learning/eng.html>

For further information contact



Email: iasw@meaust.meap.com
Website: MitsubishiElectric.com.au