

# Compact Drive Solution

FR-E700

PRODUCT FLYER



Achieving the top level of driving performance in a compact body, the Mitsubishi Electric FR-E700 Inverters provide outstanding operability while offering high reliability and easy maintenance. With intelligent functions for every application including sensorless vector control, advanced auto-tuning and torque limiting functionality. The Engineering software FR Configurator 2, facilitates operations from inverter start-up to maintenance.



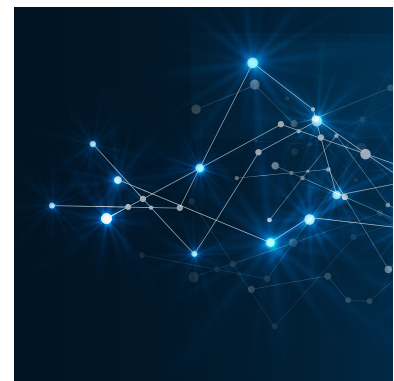
## Simple Operation

The integrated control unit with the one-touch digital dial gives the user direct access to all important parameters. Additionally, parameters can be entered and shown on the integrated LCD display.



## Long Lifetime

The FR-E700 is designed for a service life over 10 years. This was possible by high performance heat resistant capacitors and cooling fans.



## Flexible Communication

Plug-in options supporting digital input, analog output extension, and a variety of communications networks such as CC-Link, DeviceNet and PROFIBUS-DP. Functions can be added with option cards and additional IO modules.

## Features

- » Simple and fast installation
- » Communication options
- » Powerful software FR-configurator
- » Expandable
- » Compact
- » Automatic restart after power failures
- » Integrated USB port
- » Self-diagnosis
- » Torque limiting

# SPECIFICATIONS

<b>FR-E740 (kW)</b>		<b>0.4</b>	<b>0.75</b>	<b>1.5</b>	<b>2.2</b>	<b>3.7</b>	<b>5.5</b>	<b>7.5</b>	<b>11</b>	<b>15</b>
<b>FR-E740-□□□SC-EC</b>		<b>016</b>	<b>026</b>	<b>040</b>	<b>060</b>	<b>095</b>	<b>120</b>	<b>170</b>	<b>230</b>	<b>300</b>
<b>Output</b>	<b>Rated Capacity (kVA)</b>	1.2	2.0	3.0	4.6	7.2	9.1	13.0	17.5	23.0
	<b>Rate Current (A)</b>	1.6	2.6	4.0	6.0	9.5	12	17	23	30
	<b>Overload Current Rating</b>	150% 60 s, 200% 3 s (inverse-time characteristics)								
	<b>Rated Voltage</b>	Three-phase 380 to 480 V								
	<b>Regenerative Braking Torque</b>	100%	50%	20%						
<b>Power Supply</b>	<b>Rated Input AC Voltage/Frequency</b>	Three-phase 380 to 480 V 50 Hz/60 Hz (537 to 679 VDC)								
	<b>Permissible AC Voltage Fluctuation</b>	325 to 528 V 50 Hz/60 Hz (457 to 740 VDC)								
	<b>Permissible Frequency Fluctuation</b>	±5%								
	<b>Power Supply Capacity (kVA)</b>	1.5	2.5	4.5	5.5	9.5	12	17	20	28
<b>Protective Structure (JEM1030)</b>		Enclosed type (IP20) Open type (IP00) for the FL remote communication model, CC-Link communication model, and the dedicated EtherCAT communication model.								
<b>Cooling System</b>		Natural			Forced air cooling					
<b>Approximate Mass (kg)</b>		1.4	1.4	1.9	1.9	1.9	3.2	3.2	6.0	6.0

## Notes:

EMC directive compliant noise filter. Noise filter option which is compatible with EMC directive (EN61800-3 2nd Environment Category C3) is available. Refer to catalogue for options and accessories.

## Catalogue

<https://bit.ly/FR-E700>

## e-Learning

<https://www.mitsubishielectric.com/fa/assist/e-learning/eng.html>

For further information contact



**Email:** [iasw@meaust.meap.com](mailto:iasw@meaust.meap.com)  
**Website:** [MitsubishiElectric.com.au](http://MitsubishiElectric.com.au)