



Hybrid VRF eliminates need for refrigerant leak detection and alarms and provides comfortable experience for staff and patients.



Project Info

Application	Location
Campsie Medical & Dental Centre	Campsie, NSW

The Challenge

Campsie Medical and Dental Centre needed a system that provided an optimum temperature in rooms with varied operational requirements such as doctors' suites and waiting rooms to provide patients with the best possible care. Traditional ducted systems in these applications may have temperature differences between the different rooms, where some are too cold, and some are too warm. Variable Refrigerant Flow (VRF) systems provide individual temperature control for each room but due to AS1677 requirements for refrigerant leak detection, the centre would have to install expensive refrigerant detectors and alarms which needed yearly calibration to comply with Australian law.

Campsie Medical and Dental Centre realized they needed a smarter, space-saving solution that was uniquely tailored to suit the practice's individual room sizes and specificities.

The Team

Client & HVAC Contractor	HVAC Consultant
Primary Health Care Limited	Marline Newcastle Pty Ltd

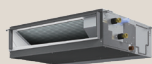
The Solution

After a rigorous evaluation process, Campsie Medical and Dental Centre implemented the Mitsubishi Electric Hybrid VRF, which allows heat exchange between refrigerant and water. The large open plan areas used standard VRF while the doctors' suites used Hybrid VRF negating the need for refrigerant leak detection and alarms and allowing the centre to reallocate funds to other areas that enhance the patients' experience and working environment for the staff. All the systems seamlessly integrated with the standard Mitsubishi Electric centralised controller AG-200A.

UNIT INFORMATION



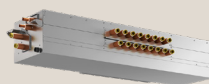
Outdoor Units
 PURY-WP200YJM-A x 2
 PURY-P500YSJM-A x 1



Indoor Units
 PEFY-WP25VMA-E x 9
 PEFY-WP50VMA-E x 1
 PEFY-P140VMH-E x 1



PEFY-P80VMH-E x 1
 PEFY-P200VMHS-E x 1
 PEFY-P125VMH-E x 1



BNC
 CMB-WP108V-G x 2
 CMB-P108V-GA1 x 1



Controllers
 AG-150A x 1
 AG-150A Web Browser x 1
 PAR-U02MEDA

