

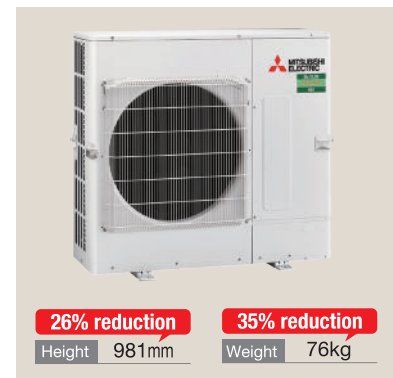
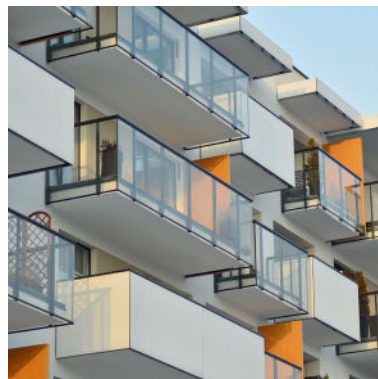
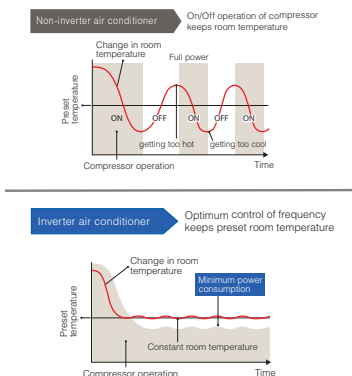
Mr Slim Outdoor Units

PUZ-M Inverter Series

PRODUCT FLYER



Mitsubishi Electric is pleased to expand the connection line up of its Mr Slim **INVERTER** M Series. Now connectable to our range of HAA Series 2 piece construction ducted units, PLA cassettes and PCA under ceiling units in 10 and 12.5 kW models. Together with our range of GAA and low profile PEAD Series ducted units provides a flexible choice to suit most applications.



Full Inverter Control

Mitsubishi Electric Inverters ensure a high level of performance, including the finer control of operation frequency. As a result, improved power management is applied in all heating/cooling ranges, and maximum comfort is achieved while consuming less energy.

Compact Design & Less Intrusive

Compared to our current Twin Fan model, PUZ-M100/125 is now a smaller unit for the same capacity. Due to its size it is less obtrusive and more easily hidden from view. Provides flexibility with installations depending on location of the unit.

Easier Transportation & Installation

The PUZ-M100/125 have a 26% reduction in height and 35% reduction in weight, compared to our Twin Fan model. Making it easier to transport and handle during installation.

Features

- » Single fan: PUZ-M100/125
- » Twin fan: PUZ-M140
- » Demand response capable
- » Wi-Fi compatible (optional adapter required per indoor unit)
- » Full Inverter technology
- » R32 refrigerant for lower GWP (Global Warming Potential), compared to R140A
- » Single phase power
- » Compact and light weight: PUZ-M100/125

SPECIFICATIONS

SERIES			PEA-M GAA Series (Ceiling Concealed)			PEAD-M Series (Ceiling Concealed)			
Indoor Unit			PEA-M100GAA	PEA-M125GAA	PEA-M140GAA	PEAD-M100JAAD	PEAD-M125JAAD	PEAD-M140JAAD	
Outdoor Unit			PUZ-M100VKA-A	PUZ-M125VKA-A	PUZ-M140VKA-A	PUZ-M100VKA-A	PUZ-M125VKA-A	PUZ-M140VKA-A	
Refrigerant			R32						
Power Source			230V, Single Phase, 50Hz						
Cooling	Capacity (Min-Rated-Max)	kW	4.0 - 10.0 - 10.6	6.0 - 12.0 - 13.5	6.2 - 14.0 - 15.3	4.0 - 10.0 - 10.6	6.0 - 12.0 - 13.5	6.2 - 14.0 - 15.3	
	Total Input (Rated)	kW	3.08	3.81	4.22	3.06	3.83	4.40	
	EER/AEER		3.24/3.12	3.14/3.04	3.31/3.22	3.26/3.13	3.13/3.03	3.18/3.09	
	AEER (Part-Load%) *1		4.40	3.83	-	4.40	3.78	4.01	
	Running Current (Rated)	A	14.5	18.5	20.4	14.1	17.8	20.4	
	Sound Pressure Level	In (Lo-Mid-Hi)		33 - 38 - 42	42 - 45		33 - 38 - 42	36 - 40 - 44	40 - 44 - 49
		Out (PWL)		52 (71)	54 (72)	53 (71)	52 (71)	54 (72)	53 (71)
Air Volume (In) Lo-Mid-Hi	L/S		567 - 700	800 - 1000		400 - 483 - 567	492 - 592 - 700	533 - 660 - 767	
Heating	Capacity (Min-Rated-Max)	kW	2.8 - 12.5 - 12.5	4.1 - 14.0 - 15.5	5.7 - 16.0 - 18.0	2.8 - 12.5 - 12.5	4.1 - 14.0 - 15.5	5.7 - 16.0 - 18.0	
	Total Input (Rated)	kW	3.36	3.54	4.20	3.35	3.68	4.30	
	COP/ACOP		3.72/3.58	3.95/3.81	3.80/3.69	3.73/3.59	3.8/3.67	3.72/3.61	
	Running Current (Rated)	A	15.8	17.3	20.3	16.5	17.1	20.0	
	Sound Pressure Level	In (Lo-Mid-Hi)		39 - 42	42 - 45		33 - 38 - 42	36 - 40 - 44	40 - 44 - 49
		Out (PWL)		54 (72)	56 (74)	54 (72)	54 (72)	56 (74)	54 (72)
	Air Volume (In) Lo-Mid-Hi	L/S		567 - 700	800 - 1000		400 - 483 - 567	492 - 592 - 700	533 - 650 - 767
Max. Running Current	A		23.28	29.78	30.86	29.00	29.30	29.64	
Indoor Unit	Input [Cool/Heat] (Rated)	kW	0.21/0.21		0.49/0.49	0.25/0.23		0.36/0.34	
	Dimensions (HxWxD)	mm	400 x 1400 x 634			250 x 1400 x 732		250 x 1600 x 732	
	Weight	kg	63			39	40	44	
	Static Pressure	Pa	50/100/150			35/50/70/100/125			
Outdoor Unit	Dimensions (HxWxD)	mm	981 - 1050 - 330 (+40)		1338 - 1050 - 330 (+40)	981 - 1050 - 330 (+40)		1338 - 1050 - 330 (+40)	
	Weight	kg	76	84	99	76	84	99	
Piping	Diameter (Gas/Liquid)	mm	15.88/9.52			15.88/9.52			
	Max. Length/Height	m	55/30			55/30			
Guaranteed Operating Range (Outdoor)	Cooling (°C)		-15 ~ 46			-15 ~ 46			
	Heating (°C)*2		-5 (-15 ^o) ~ 21			-5 (-15 ^o) ~ 21			
Precharge Refrigerant R32	kg	3.1 (30m)	3.6 (30m)	4.0 (55m)	3.1 (30m)	3.6 (30m)	4.0 (55m)		
Additional Refrigerant	g/m	200	200	-	200	200	-		
Spigot Sizes	Supply Air	mm	250 x 921			178 x 1360			
	Return Air	mm	330 x 1102			210 x 1358		210 x 1558	

*1 MEPS compliant at part load.

*2 Optional air protection guide is required where ambient temperature is lower than -5°C.

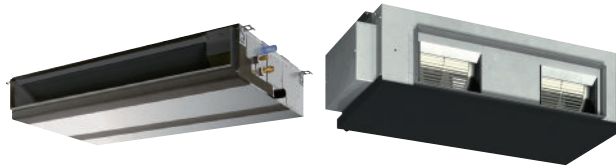
OUTDOOR UNITS



PUZ-M100/125VKA-A

PUZ-M140VKA-A

INDOOR UNITS



PEAD-M100/125/140JAAD

PEA-M100/125/140GAA

CONTROLLERS

ZONE CONTROLLER WALL CONTROLLER BLUETOOTH* CONTROLLER



PAC-ZC4(8)0H-E PAR-40MAA PAR-CT01MAA
Optional Optional -S/SB/PB
Optional

*Bluetooth function is only available for PAR-CT01MAA-SB and PAR-CT01MAA-PB. It is not available on PAR-CT01MAA-S.



*Optional upgrade adapter required per unit. Requires an Internet connection and the App downloaded from the App Store or Google Play Store on your smartphone or tablet with the latest Operating System available.

*To use Amazon Alexa to control your air conditioner, you will need an Amazon Alexa Echo device.
*To use Google Assistant to control your air conditioner, you will need a Google Home smart speaker.

SPECIFICATIONS

SERIES			PEA-M HAA Series (Ceiling Concealed)			
Indoor Unit			PEA-M100HAA	PEA-M125HAA	PEA-M140HAA	
Outdoor Unit			PUZ-M100VKA-A	PUZ-M125VKA-A	PUZ-M140VKA-A	
Refrigerant			R32			
Power Source			230V, Single Phase, 50Hz			
Cooling	Capacity (Min-Rated-Max)	kW	4.0 - 10.0 - 10.6	6.0 - 12.0 - 13.5	6.2 - 14.0 - 15.3	
	Total Input (Rated)	kW	3.02	3.78	4.24	
	EER/AEER		3.31/3.21	3.17/3.10	3.30/3.23	
	AEER (Part-Load%) *1		-	4.25	-	
	Running Current (Rated)	A	13.8	17.4	19.5	
	Sound Pressure Level	In (Lo-Mid-Hi)		29 - 32 - 36 - 38	35 - 38 - 42 - 45	35 - 38 - 42 - 45
		Out (PWL)		52 (71)	54 (72)	53 (71)
Air Volume (In) Lo-Mid-Hi	L/S		500 - 567 - 633 - 700	700 - 800 - 900 - 1000	700 - 800 - 900 - 1000	
Heating	Capacity (Min-Rated-Max)	kW	2.8 - 12.5 - 12.5	4.1 - 14.0 - 15.5	5.7 - 16.0 - 18.0	
	Total Input (Rated)	kW	3.24	3.44	3.85	
	COP/ACOP		3.85 /3.75	4.06/3.96	4.15/4.06	
	Running Current (Rated)	A	14.8	16.0	17.7	
	Sound Pressure Level	In (Lo-Mid-Hi)		29 - 32 - 36 - 38	35 - 38 - 42 - 45	35 - 38 - 42 - 45
		Out (PWL)		54 (72)	56 (74)	54 (72)
	Air Volume (In) Lo-Mid-Hi	L/S		500 - 567 - 633 - 700	700 - 800 - 900 - 1000	700 - 800 - 900 - 1000
Max. Running Current	A		23.4	30.2	0.477	
Indoor Unit	Input [Cool/Heat] (Rated)	kW	0.187			
	Dimensions (HxWxD)	mm	380 x 1405 x 900			
	Weight	kg	63	66		
	Static Pressure	Pa	50 - 100 - 150			
Outdoor Unit	Dimensions (HxWxD)	mm	981 x 1050 x 330 (+40)		1338 x 1050 x 330 (+40)	
	Weight	kg	76	84	99	
	Breaker Size	A	32	32	40	
Piping	Diameter (Gas/Liquid)	mm	15.88/9.52			
	Max. Length/Height	m	55/30			
Guaranteed Operating Range (Outdoor)	Cooling (°C)		-15 ~ 46			
	Heating (°C)*2		-15 ~ 21			
Precharge Refrigerant R32	kg	3.1 (30m)	3.6 (30m)	4.0 (55m)		
Additional Refrigerant	g/m	200	200	-		
Spigot Sizes	Supply Air	mm	1325 x 266			
	Return Air	mm	ø400 x 2			

*1 MEPS compliant at part load.

*2 Optional air protection guide is required where ambient temperature is lower than -5°C.

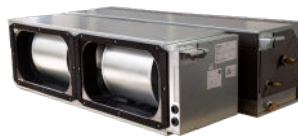
OUTDOOR UNITS



PUZ-M100/125VKA-A

PUZ-M140VKA-A

INDOOR UNITS



PEA-M100/125/140HAA

CONTROLLERS

ZONE CONTROLLER WALL CONTROLLER BLUETOOTH* CONTROLLER



PAC-ZC4(8)0H-E PAR-40MAA PAR-CT01MAA
 PAC-ZC4(8)0L-E Optional -S/SB/PB
 Optional Optional Optional

*Bluetooth function is only available for PAR-CT01MAA-SB and PAR-CT01MAA-PB. It is not available on PAR-CT01MAA-S.



*Optional upgrade adapter required per unit. Requires an Internet connection and the App downloaded from the App Store or Google Play Store on your smartphone or tablet with the latest Operating System available.

*To use Amazon Alexa to control your air conditioner, you will need an Amazon Alexa Echo device.

*To use Google Assistant to control your air conditioner, you will need a Google Home smart speaker.

SPECIFICATIONS

SERIES			PLA-M Series (Ceiling Cassette)		PCA-M Series (Ceiling Suspended)		
Indoor Unit			PLA-M100EA-A	PLA-M125EA-A	PCA-M100KA	PCA-M125KA	
Outdoor Unit			PUZ-M100VKA-A	PUZ-M125VKA-A	PUZ-M100VKA-A	PUZ-M125VKA-A	
Refrigerant			R32				
Power Source			230V, Single Phase, 50Hz				
Cooling	Capacity (Min-Rated-Max)	kW	4.0 - 10.0 - 10.6	5.8 - 12.0 - 13.0	4.0 - 10.0 - 10.6	5.7 - 11.5 - 13.0	
	Total Input (Rated)	kW	2.88	3.46	2.97	3.60	
	EER/AEER		3.47/3.36	3.46/3.38	3.36/3.26	3.19/3.11	
	AEER (Part-Load%) *1		-	-	-	4.23	
	Running Current (Rated)	A	12.9	16.8	13.4	16.3	
	Sound Pressure Level	In (Lo-Mid-Hi)		31 - 34 - 37 - 40	33 - 37 - 41 - 44	37 - 39 - 41 - 43	39 - 41 - 43 - 45
	Out (PWL)		52 (71)	54 (72)	52 (71)	54 (72)	
	Air Volume (In) Lo-Mid-Hi	L/S	317 - 383 - 433 - 483	350 - 417 - 467 - 517	367 - 400 - 433 - 467	383 - 417 - 450 - 483	
Heating	Capacity (Min-Rated-Max)	kW	2.8 - 11.2 - 12.5	4.1 - 14.0 - 15.0	2.8 - 11.2 - 12.5	4.1 - 14.0 - 15.0	
	Total Input (Rated)	kW	2.98	3.85	3.38	4.35	
	COP/ACOP		3.75/3.64	3.63/3.55	3.31/3.22	3.21/3.15	
	Running Current (Rated)	A	13.3	17.3	15.3	19.5	
	Sound Pressure Level	In (Lo-Mid-Hi)		31 - 34 - 37 - 40	33 - 37 - 41 - 44	37 - 39 - 41 - 43	39 - 41 - 43 - 45
		Out (PWL)		54 (72)	56 (74)	54 (72)	56 (74)
	Air Volume (In) Lo-Mid-Hi	L/S	317 - 383 - 433 - 483	350 - 417 - 467 - 517	367 - 400 - 433 - 467	383 - 417 - 450 - 483	
Max. Running Current			A	20.5	27.2	20.7	27.3
Indoor Unit	Input [Cool/Heat] (Rated)	kW	0.07	0.10	0.09	0.11	
	Dimensions (HxWxD)	mm	298 × 840 × 840		230 × 1600 × 680		
	Weight	kg	24	27	37	38	
Outdoor Unit	Dimensions (HxWxD)	mm	981 × 1050 × 330 (+40)		981 × 1050 × 330 (+40)		
	Weight	kg	76	84	76	84	
	Breaker Size	A	32				
Piping	Diameter (Gas/Liquid)	mm	15.88/9.52				
	Max. Length/Height	m	55/30				
Guaranteed Operating Range (Outdoor)		Cooling (°C)	-15 ~ 46				
		Heating (°C)*2	-15 ~ 21				
Precharge Refrigerant R32		kg	3.1 (30m)	3.6 (30m)	3.1 (30m)	3.6 (30m)	
Additional Refrigerant		g/m	200	200	200	200	

*1 MEPS compliant at part load.

*2 Optional air protection guide is required where ambient temperature is lower than -5°C.

OUTDOOR UNITS



PUZ-M100/125VKA-A

PUZ-M140VKA-A

INDOOR UNITS



PLA-M100/125EA-A

PCA-M100/125KA

CONTROLLERS

WALL CONTROLLER BLUETOOTH* CONTROLLER



PAR-40MAA
Optional

PAR-CT01MAA
-S/SB/PB
Optional

*Bluetooth function is only available for PAR-CT01MAA-SB and PAR-CT01MAA-PB. It is not available on PAR-CT01MAA-S.



*Optional upgrade adapter required per unit. Requires an Internet connection and the App downloaded from the App Store or Google Play Store on your smartphone or tablet with the latest Operating System available.
*To use Amazon Alexa to control your air conditioner, you will need an Amazon Alexa Echo device.
*To use Google Assistant to control your air conditioner, you will need a Google Home smart speaker.



MitsubishiElectric.com.au