

# 56P-QF60LCU

56" Ultra High Resolution LCD Display

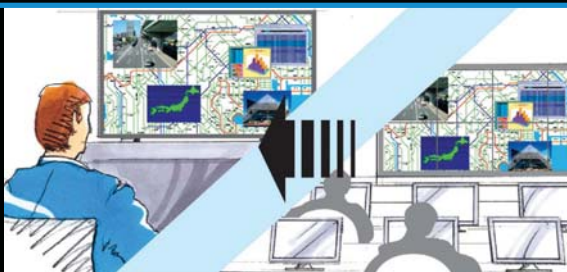


## FOUR TIMES THE RESOLUTION OF A STANDARD FULL HD DISPLAY

The 56P-QF60LCU from Mitsubishi Electric is the ideal solution for applications requiring high levels of screen detail. With a native 3840 x 2160 resolution, as well as range of performance enhancing features, this 56" display is suitable for several types of application.

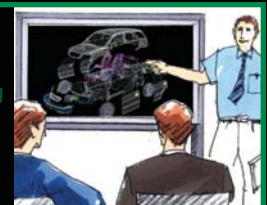
### CONTROL ROOMS

View images from several sources on the one display. Perfect for use in traffic management, power grid monitoring and other control room situations.



### Image Review

Ideal for CAD review, security camera monitoring and other image checking applications.



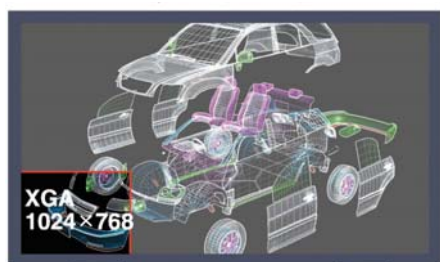
### Digital Archiving

Publicly display ultra high resolution images in places such as museums, libraries and office foyers



## Comparison with other Display Resolutions

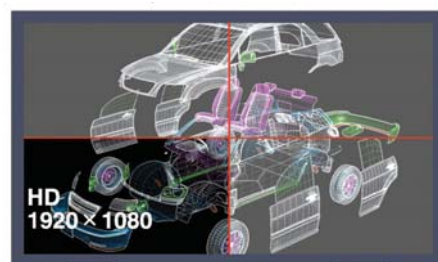
The Mitsubishi Electric Quad Full HD display offers more than 8 megapixels of video data on a single screen. That's equivalent to four full HD (1920 x 1080 pixel) displays running in 2 x 2 format. Similarly, the 56P-QF560LCU offers over 10 x XGA (1024 x 768) resolution, or over 5 x SXGA+ (1400 x 1050) resolution - all on the one screen.



**Over 10 times  
XGA resolution**



**Over 5 times  
SXGA+ resolution**



**4 times  
Full HD resolution**

## Features

- **High Brightness and Contrast** - With a 500cd/m<sup>2</sup> brightness and 1200:1 contrast ratio, the 56P-QF60LCU delivers sharp and clear images.
- **Lower Total Cost of Ownership** - In addition to being able to display a vast amount of visual information on a single screen, the 56P-QF560LCU offers longer life operation and lower power consumption compare to other display solutions with similar resolution.

## Specifications

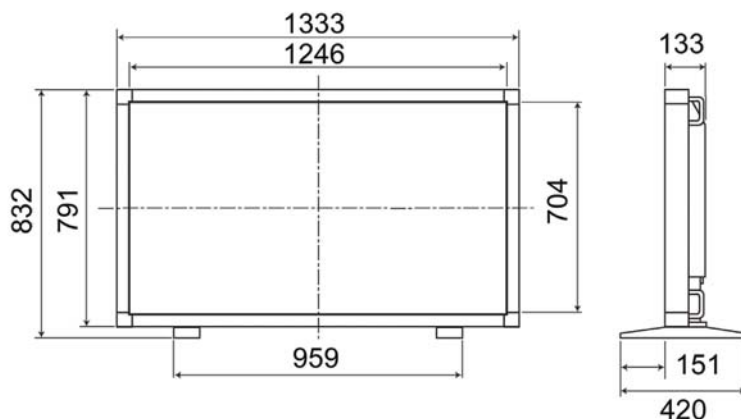
Model	56-QF60LCU
Resolution	3840 x 2160
Panel Size	56" (56" Viewable)
Pixel Pitch	0.108(H) x 0.324(V)
Colour	16.7 Million
Response Speed*1	GTG 6.5ms
Brightness (typical)	500cd/m <sup>2</sup>
Contrast Ratio	1200:1
Back Light System	CCFL
Back Light Lifetime	50,000 hours

\*1 Average response time between certain gradation levels

Viewing Angle*2	Horizontal:±88° Vertical:±88°
Input Resolution	Full HD(1920 x 1080 pixel) x 4
Digital RGB Signal Input	DVI-D x 4
Power Supply	AC 100-240V 50/60Hz
Power Consumption	550W (maximum)
Dimensions (with stand)	1333(W) x 832(H) x 420(D) mm
(without stand)	1333(W) x 791(H) x 133(D) mm
Operating Temperature	5°C - 35°C
Operating Humidity	20% - 80% non condensing
Weight (with stand)	51kg

\*2 Angle at which images are displayed at a white-to-black contrast level of 30 or higher

## Dimensions



**MITSUBISHI ELECTRIC AUSTRALIA**

348 Victoria Rd Rydalmere, NSW 2116 Phone: (02) 9684 7777 Fax: (02) 9684 7208

[www.MitsubishiElectric.com.au](http://www.MitsubishiElectric.com.au)

