

Vertical Industrial Robot

RV-FR Series

PRODUCT FLYER



MELFA **FR**
SERIES

Cutting-edge servo control and optimised arm construction, with dedicated motor and amplifier to provide extremely fast and precise heavy-duty operation. Applicable to conveying or processing medicinal products and foods. Suitable for diverse works by easy connectivity with Mitsubishi Electric PLCs and FA equipment.



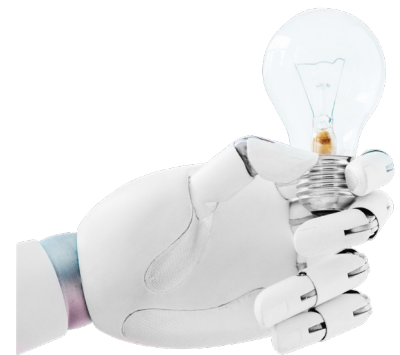
Slim Arms

Compact body and slender arms to cover large work areas, increased range of movement along each axis. An ideal robot for compact cell construction as the use of space is highly efficient. Perfect for transporting, assembling and inspecting small components.



Multi-joint

Optimised arm length and 6 joints for a broader range of movement to support a wide range of layouts. Suitable for various types of work, such as transporting mechanical parts, assembling electrical components and packaging products such as pharmaceuticals and foodstuffs.




Plenty of Scope

For using multiple grippers or multi-function grippers. Capable of handling work such as transporting high-load mechanical parts, assembling electrical components and packaging pharmaceutical products.

Features

- » Seamless connection and integration
- » Intelligence
- » Safety features
- » Compatible with vision systems
- » High-speed operation
- » Compact and powerful
- » Quick posture changes
- » Full use of installation space
- » Flexible automation

SPECIFICATIONS

										
Type	RV-2FR	RV-2FRL	RV-4FR	RV-4FRL	RV-7FR	RV-7FRL	RV-7FRL	RV-13FR	RV-13FRL	RV-20FR
Maximum load capacity	3kg		4kg		7kg			13kg		20kg
Maximum reach radius	504mm									
			515mm							
		649mm		649mm						
					713mm					
						908mm				
								1094mm		1094mm
								1388mm		
							1503mm			

Catalogue

https://bit.ly/SCARA_Vertical_Robots

e-Learning

<https://www.mitsubishielectric.com/fa/assist/e-learning/eng.html>

For further information contact



Email: iasw@meaust.meap.com
Website: [MitsubishiElectric.com.au](https://www.mitsubishielectric.com.au)