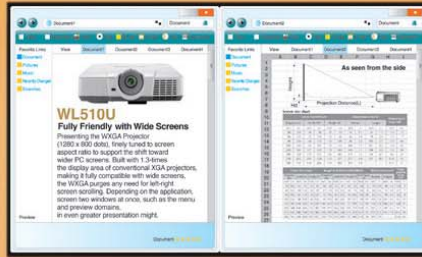




MITSUBISHI ELECTRIC

MULTIMEDIA DATA/VIDEO PROJECTORS

Changes for the Better



Unveiling Our Mobile WXGA Model ~ Wide-Screen Images in All Their Natural Glory ~

Brightness
2600lm

Contrast
2000:1

Long-life lamp
4000h



PORTABLE WXGA PROJECTOR

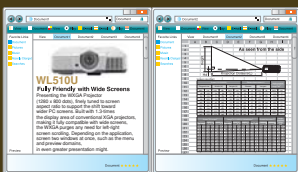
WD510U



Native Wide Screen Resolution

Supporting the shift towards wider PC screens, the WL2650U boasts a native WXGA (1280 x 800 pixel) resolution - 1.3 times the display area of conventional XGA projectors.

Depending on the application, users can screen two windows at once, such as a menu and preview domain, without the need for left-right scrolling. Widescreen DVD video can also be played in native resolution, free of compression.



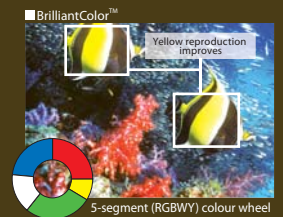
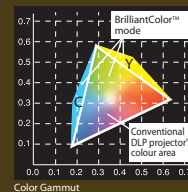
Display different windows side by side, removing the need for left-right scrolling.



Wide-screen broadcasts in all their natural glory.

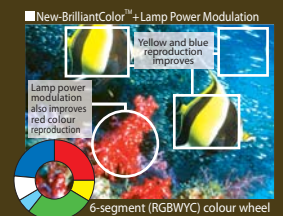
BrilliantColor™ Technology and Mitsubishi Electric's Engineering Yields Superior Colour Performance

BrilliantColor™ Technology is Texas Instruments latest innovation for producing amazingly rich and vibrant colours. At Mitsubishi Electric, we developed a 6-segment colour wheel that includes the colours R,G,B,W,Y,C. Apart from the typical red, green, blue and white, we added yellow and cyan segments to display a wider colour spectrum. In addition, we coded our colour algorithms to emphasize brightness or colour modes, designed to match the environment where the WD510U is used. Together with selective lamp powered modulation techniques, the WD510U with BrilliantColor™ technology acts intelligently to boost colours to improve the intensity and vibrancy of an entire image. For instance, when projecting an already-bright screen image, the lamp is programmed to provide brighter, more vivid colours. In contrast, if the image shows genuine colour reproduction, the algorithm delivers just the right colours with the appropriate radiance for maximum visual impact.



Lamp Power Modulation

Presentation Mode (stressing brightness)		Normal Mode (stressing colour reproduction)	
Light intensity increases for white and cyan segments on the colour wheel, emphasizing bright colours in even more vivid tones.		Light intensity increases for the RGB segment on the colour wheel, ensuring ample brightness while screening brilliant colours.	
High Power		High Power	
Normal Power		Normal Power	
Low Power		Low Power	
Lamp Power (Basic concept)		Lamp Power (Basic concept)	

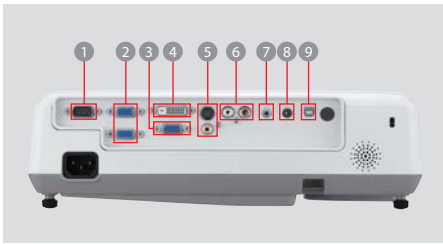




Portable WXGA projector

WD510U

Input and Output Terminals



- 1 Serial RS-232C
- 2 PC / Component Video input (mini D-sub 15pin)
- 3 PC / Component Video output
- 4 DVI-D (with HDCP)
- 5 S-Video / RCA
- 6 Audio input [RCA jack (L/R)]
- 7 Audio input (stereo mini jack)
- 8 Audio output
- 9 USB terminal for Page Up/Down

Outstanding Presentation Functions

Functional Performance at its best

- ▶ 2600 ANSI Lumens of outstanding brightness
- ▶ Super low noise operation at 29dBA*1
- ▶ Centre lens design for symmetrical installation
- ▶ Splash screen and wall screen support
- ▶ Discreet audio and video inputs for computers and video sources

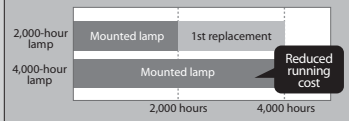


A Better Investment with a Lower Cost of Ownership

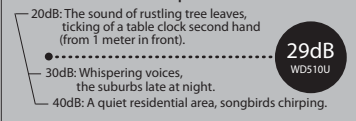
- ▶ Long-life lamp of 4,000 hours*2
- ▶ Top-access lamp cover for easy replacements
- ▶ Filter-free design
- ▶ Enhanced security features with reinforced anchor bars and password protection
- ▶ Time-saving instant shut down feature



<Lamp Replacement Frequency*3>



<Noise Level Examples>



(*1): When used at the low lamp mode. Maximum fan noise at standard mode use is 35dBA.

(*1): When used at the low lamp mode. Maximum lamp life at standard mode use is 2,000 hours.

(*2): Lamp life refers to the average time required for brightness to be reduced by half, and not the time specified in the warranty. Use time may vary widely by the environment and conditions, and whether or not cleaning and other maintenance procedures are followed.

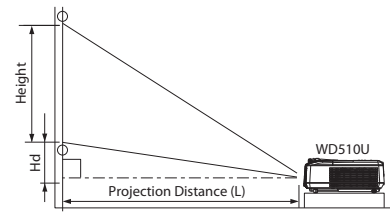
Specifications

Model	WD510U
Display technology	0.65"1-Chip DMD
Resolution	1280 x 800 (total 1,024,000 pixels)
Brightness (Max)	2600 lumens
Contrast	2000:1
Picture size	40"~300"
Source lamp**	180W (Shut Off Time 4000Hrs) with Low Mode 230W (Shut Off Time 2000Hrs) with Standard Mode
Computer compatibility	640 x 480 ~ 1280 x 1024 True: 1280 x 800, Sync on green available
Video compatibility	NTSC / NTSC4.43 / PAL (including PAL-M, N) / SECAM / PAL-60, Component Video : 480i/p (525i/p), 576i/p (625i/p), 720p (750p), 1080i (1125i 60Hz), 1080i (1125i 50Hz)
Input terminals	RGB : mini D-sub15pin x 2, DVI : DVI-D (with HDCP) x 1, PC Audio : stereo mini jack (φ3.5mm) x 1, Video : RCA x 1 + S-video x 1, Video Audio : RCA jack (L/R) x 1
Output terminals	RGB : mini D-sub15pin x 1, Audio : stereo mini jack (φ3.5mm) x 1
Communication terminals	RS-232C (D-sub 9pin) x 1, USB terminal for Page Up/Down x 1
Audio speaker	2W mono
Fan noise	29dBA (at Low Mode)
Dimensions (WxHxD)	332 x 102 x 250mm (not including protrusion)
Weight	3.2kg / 7.0lbs
Power supply	AC100-240V, 50/60Hz
Optional lamp	VLTXD510LP

*All brand names and product names are trademarks, registered trademarks or trade names of their respective holders.
 **Approximate figure representing average operational life cycle.

Screen size and Projection distance

As seen from the side



Screen size chart

Screen (16:10 WXGA)						Distance from screen (L)				Height projected image (Hd)	
Diagonal size	Width (W)		Height (H)		Shortest		Longest		Height projected image (Hd)		
inch	cm	inch	cm	inch	cm	inch	m	inch	m	inch	cm
40	102	34	86	21	54	42	1.1	51	1.3	1.9	5
60	152	51	129	32	81	64	1.6	78	2.0	2.9	7
80	203	68	172	42	108	86	2.2	105	2.7	3.9	10
100	254	85	215	53	135	108	2.7	131	3.3	4.8	12
150	381	127	323	79	202	163	4.1	198	5.0	7.2	18
200	508	170	431	106	269	218	5.5	264	6.7	9.6	24
250	635	212	538	132	337	273	6.9	331	8.4	12.0	31
300	762	254	646	159	404	328	8.3	-	-	14.5	37

Screen (4:3 screen)				Image 16:10 WXGA 1280x800dot				Distance from screen (L)				Height projected image (Hd)			
Diagonal size	Width (W)		Height (H)	Diagonal size	Width (W)		Height (H)	Blank Space (D)		Shortest		Longest		Height projected image (Hd)	
inch	cm	inch	cm	inch	cm	inch	cm	inch	cm	inch	cm	inch	m	inch	m
40	102	32	81	24	61	38	96	32	81	2.0	5	39	1.0	48	1.2
60	152	48	122	36	91	57	144	48	122	3.0	8	60	1.5	73	1.9
80	203	64	163	48	122	75	192	64	163	4.0	10	81	2.1	99	2.5
100	254	80	203	60	152	94	240	80	203	5.0	13	102	2.6	124	3.1
150	381	120	305	90	229	142	359	120	305	7.5	19	153	3.9	186	4.7
200	508	160	406	120	305	189	479	160	406	10.0	25	205	5.2	249	6.3
250	635	200	508	150	381	236	599	200	508	12.5	32	257	6.5	312	7.9
300	762	240	610	180	457	283	719	240	610	15.0	38	309	7.9	-	-

The above numbers are approximate, and may be slightly different from the actual measurements.

MITSUBISHI ELECTRIC AUSTRALIA

348 Victoria Rd Rydalmere, NSW 2116 Phone: (02) 9684 7777 Fax: (02) 9684 7208

To find out more about WD510U and our projectors, visit us at

www.MitsubishiElectric.com.au