

Quick Start Guide

Thank you for purchasing the Diamond Digital A222 Wireless PCI Adaptor. In a few simple steps, this Quick Start Guide will show how to install the A222 Wireless PCI Adaptor and connect it to your wireless network.



Diamond Digital

A222 WIRELESS PCI ADAPTOR

STEP 1 Installing the Utilities / Driver

Follow these instructions to install the A222 Wireless PCI Adaptor on your computer.

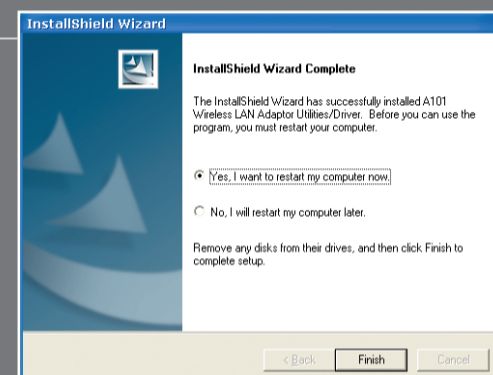
1. Insert the A222 Driver CD into your computer's CD-ROM drive - the Utilities/Driver installation window will automatically appear.



NOTE: If Autorun does not work on your computer, browse the contents of the Driver CD and double click the **Setup.exe** file to bring up the installation window.

2. Click on the **"Install A222 PCI Adaptor Utilities/Driver"** menu option.

3. Follow the prompts to install the A222 driver and utilities. Once the installation procedure is complete, select **"Yes, I want to restart my computer now"** and click **Finish**.

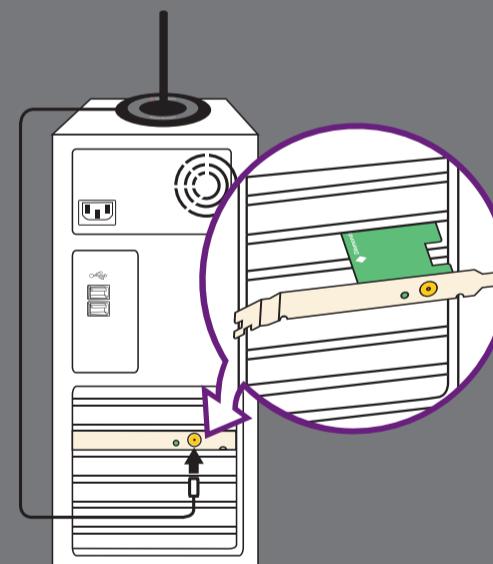


INSTALLING THE WIRELESS PCI ADAPTOR

4. Before installing the Wireless PCI Adaptor, make sure that the computer is turned off.

5. Unscrew and remove the PC's cover and then remove a vacant PCI bus expansion slot's cover.

6. Carefully slide the Wireless PCI Adaptor into the PCI bus expansion slot, applying even pressure to both ends of the adaptor. Secure the Wireless PCI Adaptor to the PC with a screw, ensuring that there is a gap of at least 2mm between the Wireless PCI Adaptor and any other adaptor or component that is installed in the PC.

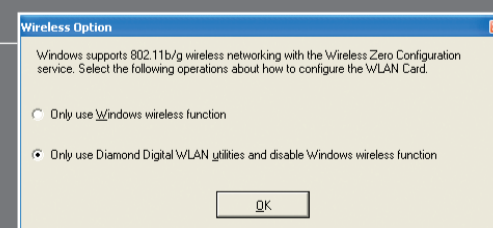


7. Replace the PC's cover and screw it in place.

8. Connect the external Antenna to the Wireless PCI Adaptor.

9. You are now ready to restart your Computer.

10. If you are running Windows XP, a **Wireless Option Window** will appear. Select **Only use the Diamond Digital Utilities and disable XP wireless function**, to activate all the Wireless LAN adaptor features and then click **OK**.

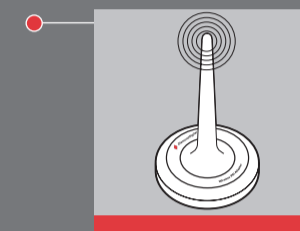


11. The A222 Wireless PCI Adaptor is now installed.

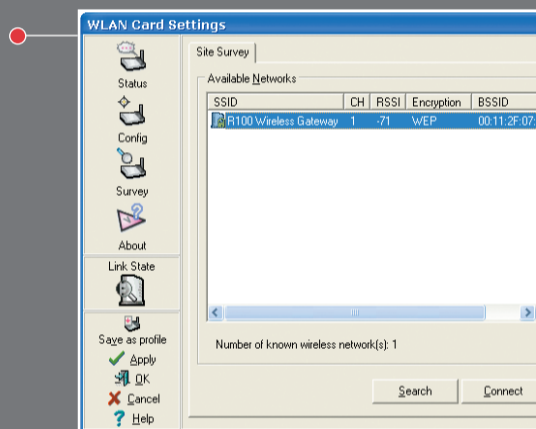
STEP 2 Connecting the A222 to your Wireless Network

Follow these instructions to connect your A222 Wireless PCI Adaptor to the R100 Wireless Gateway or other Wireless Router/Gateway device:

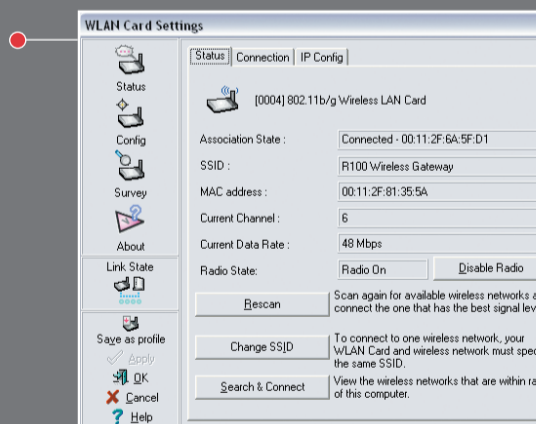
1. Double click on the **A222 Control Center** icon located on the desktop, this will open the **Wireless LAN Settings** utility.



2. To search for available wireless networks in your area, click on the **Survey** option in the left-hand menu.



3. Within the **Survey** window, a list of the **Available Networks** to connect to will appear. If Encryption is set to OFF on the desired network, highlight the network, then click on **Connect**. To view your current connection status, click on the **Status** option on the left-hand side of the window.



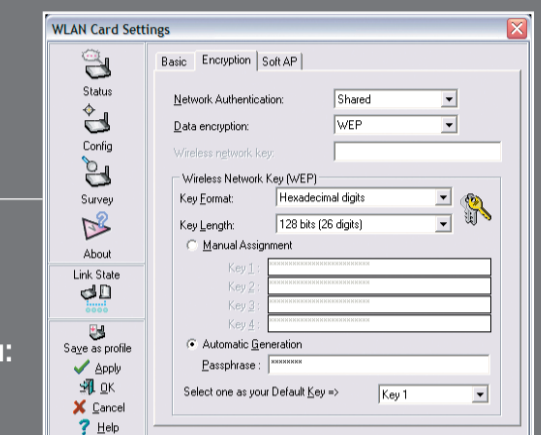
If however, the Encryption is set to WEP or WPA-PSK, you will need to configure the Wireless PCI Adaptor settings to allow you to access the secure wireless network.

STEP 3 Configuring the A222 with Encryption

WEP ENCRYPTION

This is a medium level of security that only allows users with the correct **Passphrase** or **Encryption Key** to access the wireless network. To set up your A222 Wireless PCI Adaptor:

1. Click on the **Config** button on the left-hand side of the WLAN Card Settings window.
2. The **Config** window will appear. Select the **Encryption** tab at the top of the window.
3. Set the **Network Authentication** to **Shared**.
4. Set the **Data Encryption** to **WEP**.



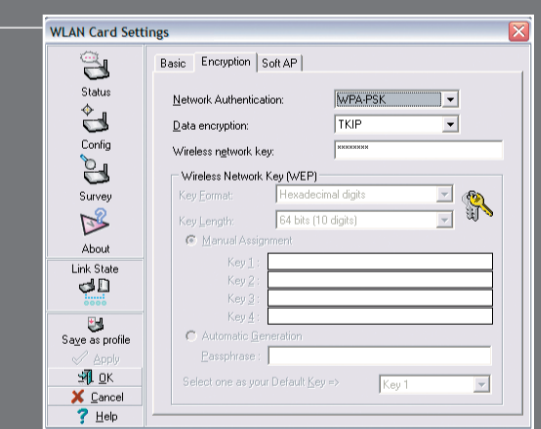
Now, within the **Wireless Network Key** submenu:

5. Set the **Key Format** to **Hexadecimal digits**.
6. Set the **Key Length** to **128 bits (26 digits)**.
7. Click on **Automatic Generation**, then enter the Passphrase into the provided text box. The **Passphrase** will be the same as the one assigned within the Gateway/Router's wireless settings.
8. Once these settings have been entered, click the **Apply** button on the left-hand side of the window.

WPA-PSK ENCRYPTION - (WINDOWS XP ONLY)

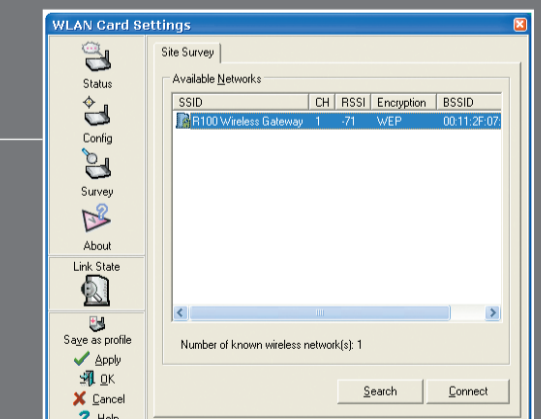
This is a high level of security that only allows users with the correct **Wireless Network Key** to access the wireless network, and is only available to systems running Windows XP. To set up your A222 Wireless PCI Adaptor:

1. Click on the **Config** button on the left-hand side of the WLAN card settings window, then click on the **Encryption** tab at the top of the window.
2. Set **Network Authentication** to **WPA-PSK**.
3. Set **Data Encryption** to **TKIP**.



4. Enter your **Wireless Network Key** into the text box. The wireless network key, which is also referred to as the Passphrase Key in some cases, is assigned within the Gateway/Router's wireless settings.
5. Once these settings have been entered, click the **Apply** button on the left-hand side of the window.

6. Now that your A222 Wireless PCI Adaptor has been configured with the WEP or WPA-PSK settings, click back on the **Survey** option on the left-hand side of the menu, then select the desired Wireless Network and click **Connect**. To view your current connection status, click on the **Status** option on the left hand side of the window.



CONGRATULATIONS!
Now you are ready to access wireless networks through your A222.