

Quick Start Guide

Thank you for purchasing the Diamond Digital A202 Wireless USB Key Adaptor. In a few simple steps, this Quick Start Guide will show you how to install the A202 Wireless USB Key Adaptor and connect it to your wireless network.

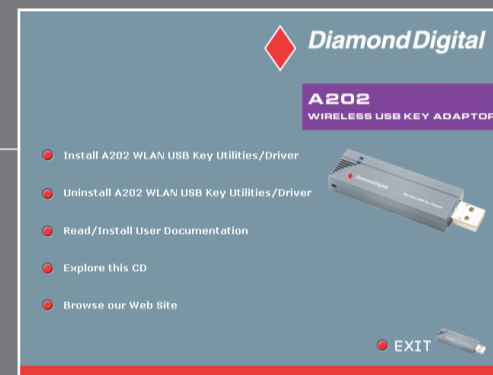


A202 WIRELESS USB KEY ADAPTOR

STEP 1 Installing the Utilities / Driver

Follow these instructions to install the A202 Wireless USB Key Adaptor on your computer.

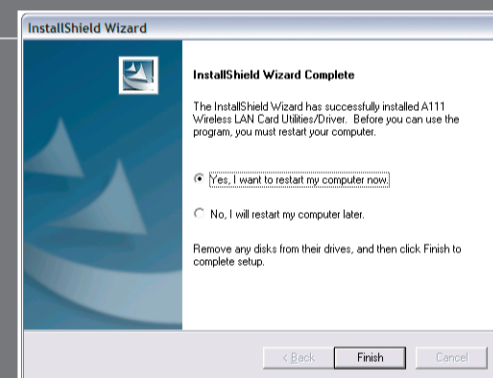
1. Insert the A202 Driver CD into your computer's CD-ROM drive - the Utilities/Driver installation window will automatically appear.



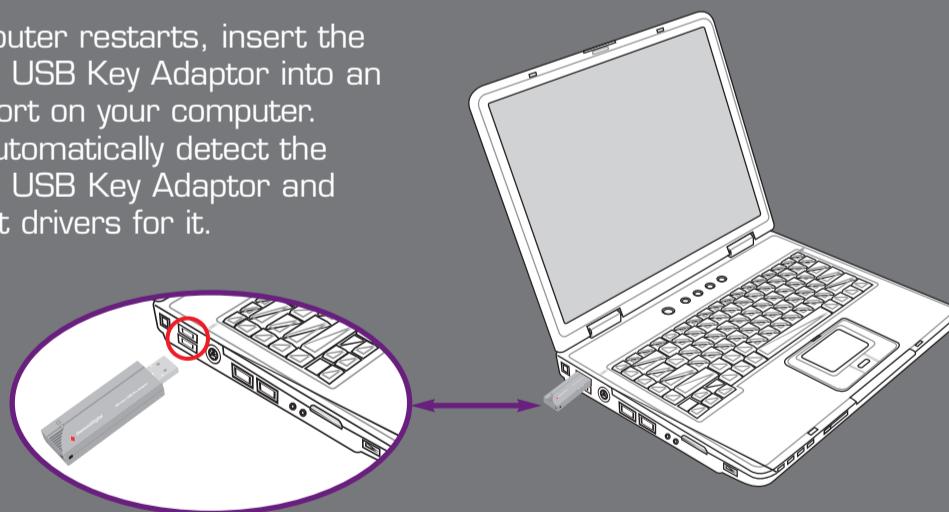
NOTE: If Autorun is NOT enabled on your computer, browse the contents of the Driver CD and double click the **Setup.exe** file to bring up the installation window.

2. Click on the "Install A202 Card Adaptor Utilities/Driver" menu option.

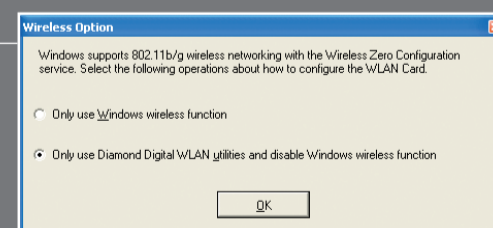
3. Follow the prompts to install the A202 driver and utilities. Once the installation procedure is complete, select "Yes, I want to restart my computer now" and click **Finish**.



4. While the computer restarts, insert the A202 Wireless USB Key Adaptor into an available USB port on your computer. Windows will automatically detect the A202 Wireless USB Key Adaptor and load the correct drivers for it.



5. If you are running Windows XP, a **Wireless Option Window** will appear. Select **Only use the Diamond Digital Utilities and disable XP wireless function**, to activate all the Wireless LAN adaptor features and then click **OK**.

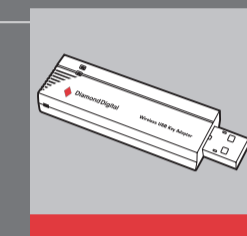


6. The A202 Wireless USB Key Adaptor is now installed.

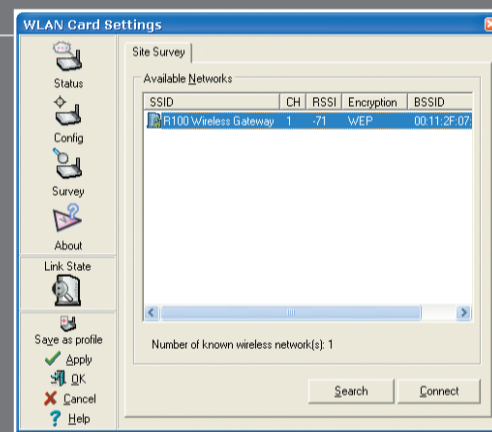
STEP 2 Connecting the A202 to your Wireless Network

Follow these instructions to connect your A202 Wireless USB Key Adaptor to the R100 Wireless Gateway or other Wireless Router/Gateway device:

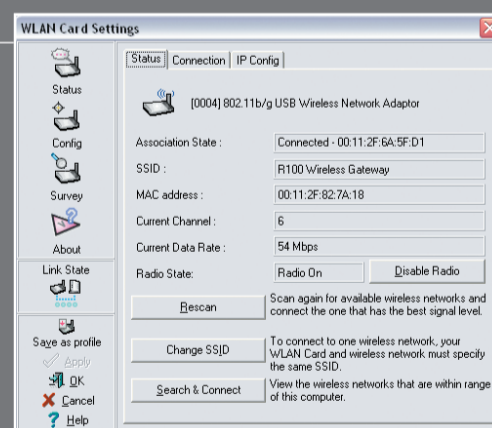
1. Double click on the **A202 Control Center** icon located on the desktop, this will open the **Wireless LAN Settings** utility.



2. To search for available wireless networks in your area, click on the **Survey** option in the left-hand menu.



3. Within the Survey window, a list of the available wireless networks to connect to will appear. If Encryption is set to OFF on the desired network, highlight the network, then click on **Connect**. To view your current connection status, click on the **Status** option on the left-hand side of the window.



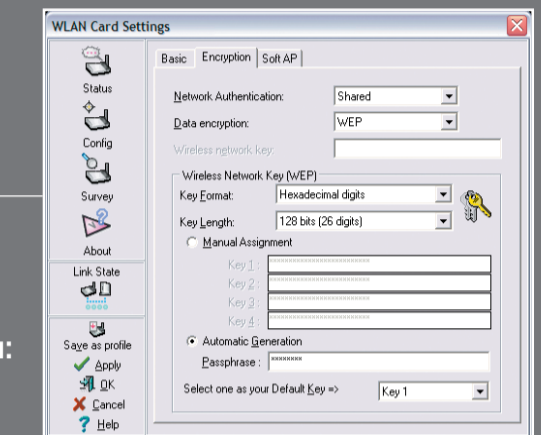
If however, the Encryption is set to WEP or WPA-PSK, you will need to configure the Wireless USB Key Adaptor settings to allow you to access the secure wireless network.

STEP 3 Configuring the A202 with Encryption

WEP ENCRYPTION

This is a medium level of security that only allows users with the correct **Passphrase** or **Encryption Key** to access the wireless network. To set up your A202 Wireless USB Key Adaptor:

1. Click on the **Config** button on the left-hand side of the WLAN Card Settings window.
2. The **Config** window will appear. Select the **Encryption** tab at the top of the window.
3. Set the **Network Authentication** to **Shared**.
4. Set the **Data Encryption** to **WEP**.



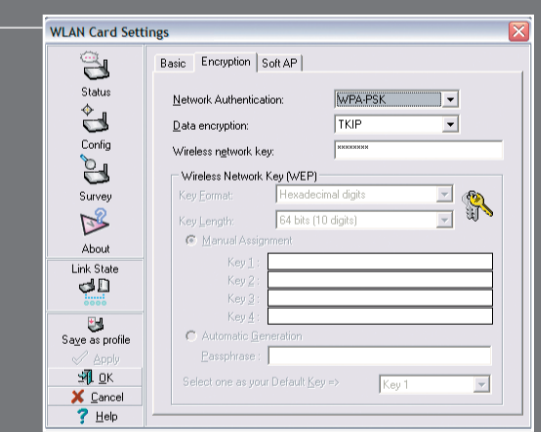
Now, within the **Wireless Network Key** submenu:

5. Set the **Key Format** to **Hexadecimal digits**.
6. Set the **Key Length** to **128 bits (26 digits)**.
7. Click on **Automatic Generation**, then enter the Passphrase into the provided text box. The **Passphrase** will be the same as the one assigned within the Gateway/Router's wireless settings.
8. Once these settings have been entered, click the **Apply** button on the left-hand side of the window.

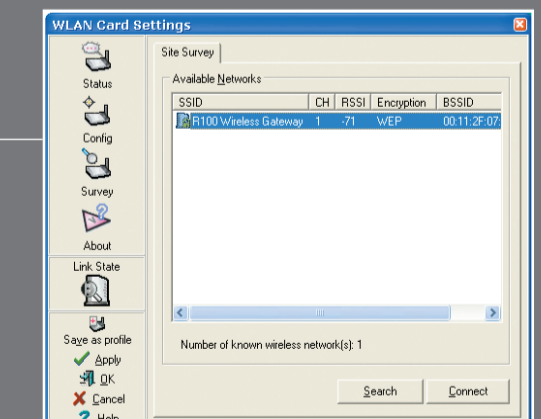
WPA-PSK ENCRYPTION - (WINDOWS XP ONLY)

This is a high level of security that only allows users with the correct **Wireless Network Key** to access the wireless network, and is only available to systems running Windows XP. To set up your A202 Wireless USB Key Adaptor:

1. Click on the **Config** button on the left-hand side of the WLAN card settings window, then click on the **Encryption** tab at the top of the window.
2. Set **Network Authentication** to **WPA-PSK**.
3. Set **Data Encryption** to **TKIP**.



4. Enter your **Wireless Network Key** into the text box. The wireless network key, which is also referred to as the Passphrase Key in some cases, is assigned within the Gateway/Router's wireless settings.
5. Once these settings have been entered, click the **Apply** button on the left-hand side of the window.
6. Now that your A202 Wireless USB Key Adaptor has been configured with the WEP or WPA-PSK settings, click back on the **Survey** option on the left-hand side of the menu, then select the desired Wireless Network and click **Connect**. To view your current connection status, click on the **Status** option on the left-hand side of the window.



CONGRATULATIONS!
Now you are ready to access wireless networks through your A202.