

MITSUBISHI ELECTRIC
REFRIGERATORS

TASTIER HEALTHIER FOOD THAT LASTS LONGER



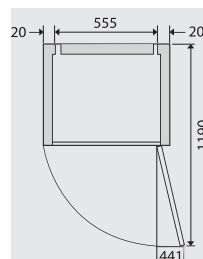
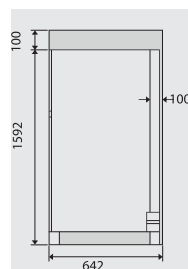
Top Mount Refrigerators

MR-260S - 260 Litre

- Silver Titanium Deodoriser - absorbs odours released by food in the refrigerator.
- Adjustable Door Shelves - offers more storage solutions to suit your needs. The level of each shelf is adjustable to suit items of different shapes and sizes.



- Front Cooling System - designed to keep the front of the refrigerator cool, the airflow is directed towards the door to ensure items in the door are kept at the correct temperature.
- Frost Free - to save you time in having to defrost your refrigerator.
- Jumbo Sliding Chilled Case - great for dairy products and processed foods, the case is equipped with a smooth sliding roller for easier access.
- 3 Spill Proof Shelves - solid clear shelves with a lip around all sides means easier cleaning and containment of any spills.



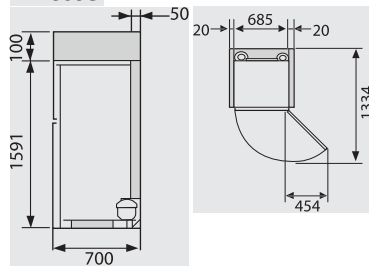
- Extra Large Frost Free Freezer - has 2 large door shelves and plenty of shelf room
- Revolving Ice Maker - ice cubes are released from the ice maker with a simple twist of the revolving handle and fall straight into the ice cube tray beneath.
- Fruit and Vegetable Crisper - large fruit and vegetable crisper to help keep your food fresher for longer.
- Multi Purpose Egg Shelf and Egg Racks - both convenient and versatile, the egg shelf holds up to 16 eggs and is perfect for storing a wide variety of small food items.
- Big Bottle Shelf and Stopper - easily holds large bottles of soft drink and the convenient stopper keeps them in place.
- Adjustable Feet - helps to level the refrigerator on uneven floors.
- Available in white or stainless steel finishes.
- 5 year parts and labour warranty.

MR-385S - 385 Litre/MR-420S - 420 Litre/MR-455S - 455 Litre

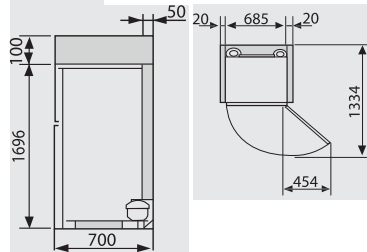
- Silver Titanium Deodoriser - absorbs odours released by food in the refrigerator.
- Surround Cooling System - distributes a constant stream of chilled air to each shelf to ensure every corner of the refrigerator is cooled evenly so that all food items remain fresh, no matter how many items are stored.
- Vitamin Guard - the double protection of herbs and negative ions helps preserve the freshness and healthy goodness of your vegetables. The negative ions help to ward off bacteria, to absorb unpleasant odours and to preserve the flavour, while the herb essence protects your vegetables nutritional value by slowing down vitamin oxidization.
- Frost Free - to save you time in having to defrost your refrigerator.
- Jumbo Sliding Chilled Case - great for dairy products and processed foods, the case is equipped with a smooth sliding roller for easier access.
- Tempered Glass Shelves - can take up to 101 kilograms of weight on each shelf.
- Revolving Ice Maker - ice cubes are released from the ice maker with a simple twist of the revolving handle and fall straight into the ice cube tray beneath.



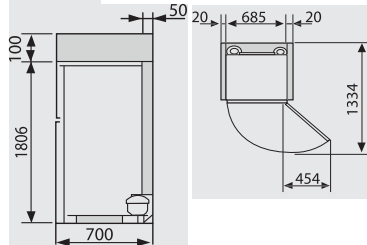
MR-385S



MR-420S



MR-455S

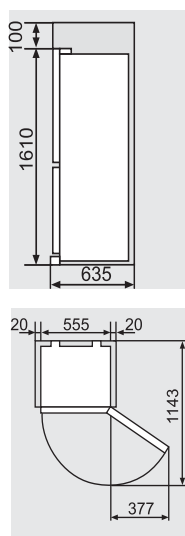


- Big Tower Light - the refrigerator is brightly illuminated by a tower style light, making the contents easy to see.
- Freezer Light - this additional light adds brightness and visibility to your freezer every time you open the door.
- Fruit and Vegetable Crisper - large fruit and vegetable crisper to help keep your food fresh for longer.
- Multi Purpose Egg Shelf and Egg Racks - both convenient and versatile, the egg shelf holds up to 24 eggs and is perfect for storing a wide variety of small food items.
- Big Bottle Shelf and Stopper - easily holds large bottles of soft drink and the convenient stopper keeps them in place.
- Adjustable Door Shelves - offers more storage solutions to suit your needs. The level of each shelf is adjustable to suit items of different shapes and sizes.
- 4 Rollers - enables the refrigerator to glide out for ease of cleaning.
- Adjustable Feet - helps to level the refrigerator on uneven floors.
- Available in white or stainless steel finishes.
- 5 year parts and labour warranty.

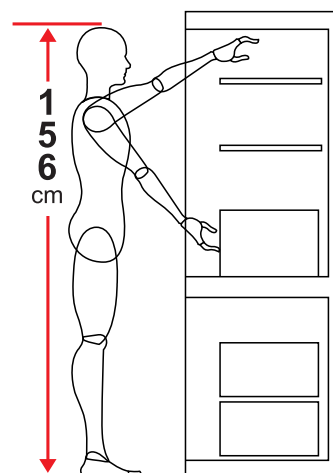
Bottom Mount Refrigerators

MR-H290S - 290 Litre

- Large Door Shelves - offers convenient storage of large and small items.
- Top Mount Refrigerator Compartment - means less bending to access the refrigerator.
- Frost Free - to save you time in having to defrost your refrigerator.
- Multi Purpose Storage Bin - great for storing eggs or other small food items or for separately storing fruit in the vegetable crisper.
- Fruit and Vegetable Crisper - to help keep your food fresher for longer.
- Clear Solid Shelves - means easier cleaning and less spills.
- Extra Large Frost Free Freezer - positioned at the bottom of the refrigerator it has 2 large draws and a shelf to keep all your frozen goods neat and tidy.
- Revolving Ice Maker - ice cubes are released from the ice maker with a simple twist of the revolving handle and fall straight into the ice cube tray beneath.
- Slim and compact design that is aesthetically pleasing.



- Adjustable Feet - helps to level the refrigerator on uneven floors.
- Available in white only.
- 5 year parts and labour warranty.



MR-CU375S - 375 Litre/MR-CU415S - 415 Litre

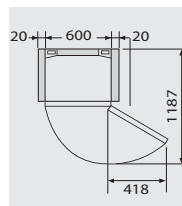
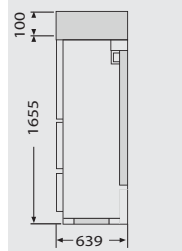
- Silver Titanium Deodoriser - absorbs odours caused by food in the refrigerator.
- Surround Cooling System - distributes a constant stream of chilled air to each shelf to ensure every corner of the refrigerator is cooled evenly so that all food items remain fresh, no matter how many items are stored.
- Frost Free - to save you time in having to defrost your refrigerator.
- Fruit and Vegetable Drawer - large fruit and vegetable drawer for easier use.
- Multi Purpose Egg Shelf and Egg Racks - both convenient and versatile, the egg shelf holds up to 12 eggs and is perfect for storing a wide variety of small food items.
- Double Sliding Chilled Case - perfect for storing dairy products, fresh fish or meats. It stores food at around 0 degrees ensuring lasting freshness.
- Three Way Flexi Shelf - designed to give extra space for tall items, one shelf splits in half and slides underneath the other half.
- Clear Solid Shelves - means easier cleaning and less spills.
- Auto Ice Maker - simply fill the water tank with water which supplies the ice cube maker. Once the water is frozen the ice maker is automatically twisted and the ice falls into the large ice tray in the freezer drawer.
- Multi Purpose Door Shelves - plenty of storage for eggs or bottles of various sizes.



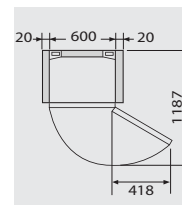
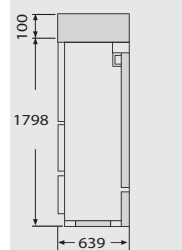
- Freezer draw with ice tray and spoon, and a convenient freezer shelf.
- 4 Rollers - enables the refrigerator to slide out for ease of cleaning.
- Adjustable Feet - helps to level the refrigerator on uneven floors.
- Available in white or stainless steel finishes.
- 5 year parts and labour warranty.



MR-CU375P



MR-CU415P



Freezers

MF-U160S - 160 Litre

- Frost Free - the freezer is totally frost free to save you time in having to defrost.
- Multi Purpose Sliding Drawers - keeps the freezer cooler by minimising loss of cool air. There are plenty of drawers to keep the freezer tidy and each drawer has plenty of space.



- Rapid Cool Mode - helps to cool the freezer faster.
- Aluminium Tray - speeds up freezing time and is useful for freezing large bulky items using rapid freeze mode.



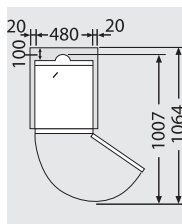
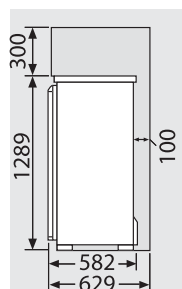
- Door Shelf - convenient extra storage space.



- External Temperature Control - the control panel located on the outside of the freezer allows temperature adjustments to be made easily without losing cool air.



- Slim and compact design that is aesthetically pleasing.
- Adjustable Feet - helps to level the freezer on uneven floors.
- Available in white only.
- 5 year parts and labour warranty.



Specifications

Model			MR-260S	MR-385S	MR-420S	MR-455S	MR-H290S	MR-CU375P	MR-CU415P	MF-U160S
Capacity (litres)	Freezer Compartment	Gross	75	130	130	130	115	67	67	160
	Refrigerator Compartment	Gross	185	255	290	324	175	198	237	-
	Vegetable Compartment	Gross	N/A	N/A	N/A	N/A	N/A	111	111	N/A
	Total	Gross	260	385	420	454	290	376	415	160
Dimensions	Width (mm)		555	685	685	685	555	600	600	480
	Height (mm)		1592	1591	1696	1806	1610	1655	1798	1289
	Depth (mm)		642	700	700	700	635	639	639	629
Weight (kg)	Net		53	70	74	78		69	73	
	Gross		60	77	78	84		76	80	
COOLING SYSTEM			FRONT COOLING	SURROUND COOLING	SURROUND COOLING	SURROUND COOLING	BACK COOLING	SURROUND COOLING	SURROUND COOLING	-
Frost Free			•	•	•	•	•	•	•	•
CFC Free			•	•	•	•	•	•	•	•
Deodoriser			Filter	Filter	Filter	Filter		Filter	Filter	
Vitamin Cassette			-	Vitamin Guard	Vitamin Guard	Vitamin Guard	-	-	-	-
Automatic Ice Maker			-	-	-	-	-	•	•	-
Energy Star Rating			3.5	4	4	4	3	3	3	3
KWH/Year			431	490	495	525	520	560	610	436
FREEZER COMPARTMENT										
Revolving Ice Maker			2	2	2	2	1	1	1	-
Ice Cube Tray			1	1	1	1	1	-	-	-
Bottom Mount Freezer			-	-	-	-	1	1	1	5
Freezer Light			-	•	•	•	-	-	-	-
Freezer Door Shelf			2	2	2	2	-	-	-	1
Solid Spill Proof Shelf			2	1	1	1	1	-	-	1
REFRIGERATOR COMPARTMENT										
Sliding Chilled Case			1	1	1	1	-	2	2	-
Solid Spill Proof Shelf			4	-	-	-	3	1	2	-
Three Way Flexi Shelf			-	-	-	-	-	1	1	-
Tempered Glass Shelf			-	3	3	4	-	-	-	-
Egg Shelf			2	2	2	2	1	1	1	-
Fixed Door Shelf			1	1	1	1	3	2	3	-
Light			•	Big Tower Light			•	Big Tower Light		
Vegetable Crisper			1	1	1	1	1	-	-	-
Adjustable Door Shelf			2	1	3	3	-	-	-	-
Bottle Shelf			2	2	2	2	1	1	1	-
Bottle Stopper			1	1	1	1	-	1	1	-
REFRIGERATOR										
Rollers			-	4	4	4	-	4	4	-
Adjustable Feet			1	2	2	2	1	2	2	1
COLOUR										
White			•	•	•	•	•	•	•	•
Stainless Steel			•	•	•	•	-	•	•	-



HEAD OFFICE: MITSUBISHI DENKI BLDG., MARUNOUCHI, TOKYO 100-8310, TELEX: J24592 CABLE: MELCO TOKYO

Distributed and guaranteed throughout Australia by:
MITSUBISHI ELECTRIC AUSTRALIA PTY. LTD.
(Incorporated in New South Wales) ABN 58 001 215 792

New South Wales:

348 Victoria Rd,
Rydalmere, 2116
PH: (02) 9684 7555
Fax: (02) 9898 1043

Victoria/Tasmania:

Suite 28,
Omnico Business Park,
270 Ferntree Gully Rd,
Notting Hill, 3168
PH: (03) 9535 7800
Fax: (03) 9535 7801

Queensland:

Unit 12,
469 Nudgee Rd,
Hendra, 4011
PH: (07) 3623 2000
Fax: (07) 3630 1888

Far North Queensland:

Capricorn Air,
13 Mackley St,
Garbutt, 4814
PH: (07) 4775 5222
Fax: (07) 4775 5305

South Australia:

77 Port Rd
Hindmarsh, 5037
PH: (08) 8340 2000
Fax: (08) 8340 0555

Western Australia:

329 Collier Rd,
Bassendean, 6054
PH: (08) 9377 3400
Fax: (08) 9377 3499

For further information please visit your retailer, call 1800 811 212 or visit www.mitsubishielectric.com.au